

*Manutec*  
L•I•M•I•T•E•D

**Braun - OralB**

# Overview



- This project required a suitable process control solution to reduce the downtime to 8 technicians' interventions in a gas cartridge filling room.
- Client specifications included:
  - Increasing gas cartridge output by 20%
  - Designing, building and installation of interlock system for main door

# Overview

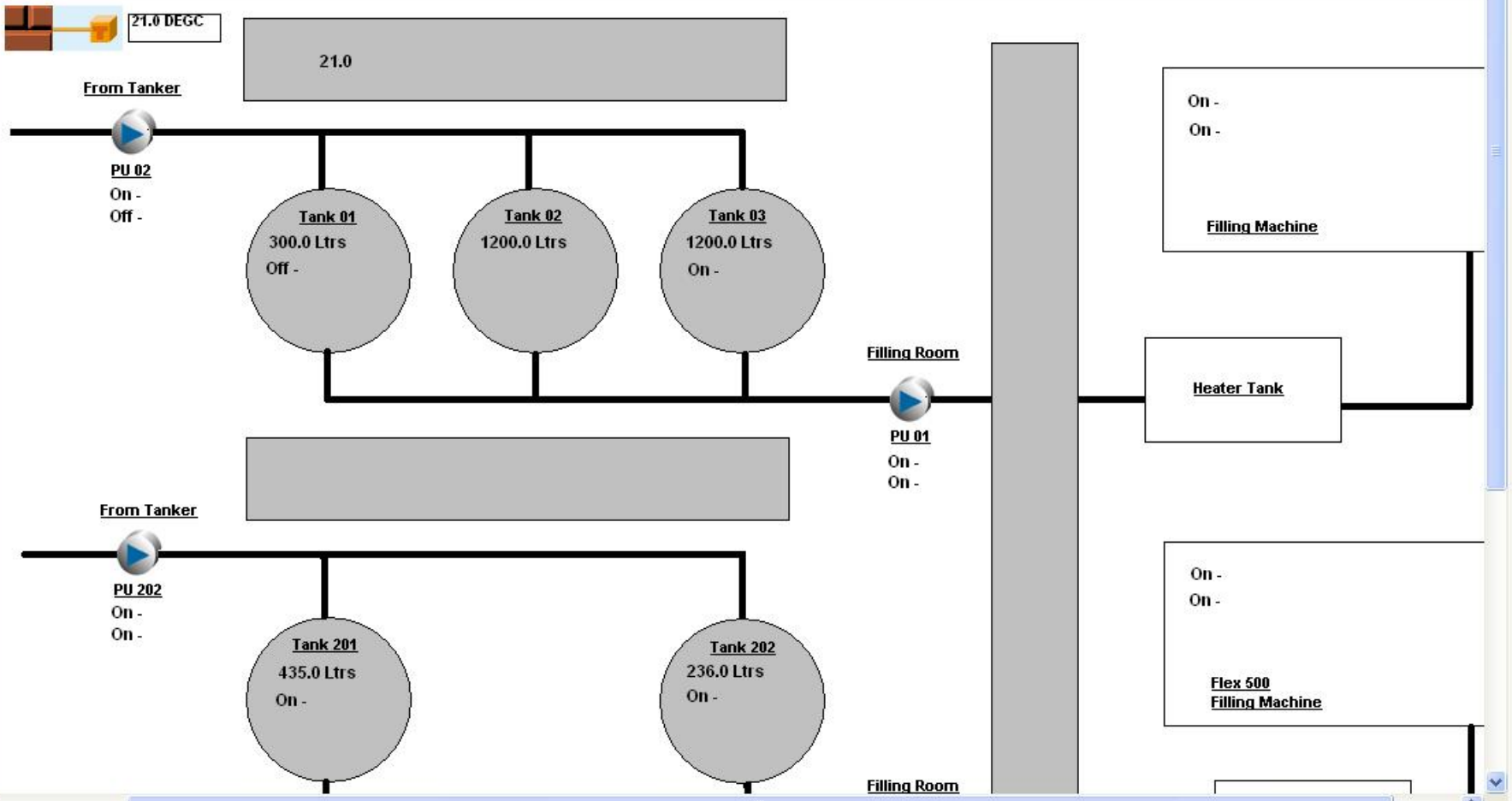


- Client specifications continued:
  - Re-designing and replacement of existing feed bunker and turning units
  - Replacement of the existing ball bearing station
- Manutec designed and programmed the PLC and all the external controls for the entire system, as per the clients' exact requirements.



# Filling Room Alcohol Tanks

Back
Forward
10 September 2007 14:19:40
Log On
Log Off
Manutec LIMITED
Points L





# Tank Filling Alarms

Back Forward Print Refresh Home Help
10 September 2007 14:23:52
Log On Log Off
Manutec LIMITED Points

21.0 DEGC

<u>Fire Alarm</u>	<u>Status</u>
<u>Fire Alarm</u>	Off -

<u>Alarms To Operators</u>	<u>Status</u>
<u>Panel Audible Alarm</u>	OK -
<u>Panel Flashing Beacon</u>	OK -
<u>Room Audible Alarm</u>	OK -

<u>Emergency Stops</u>	<u>Status</u>
<u>Room Emergency Stop</u>	On -
<u>Ethanol No 1 Fast Stop</u>	On -
<u>Ethanol No 2 Fast Stop</u>	On -
<u>Flex 500 Fast Stop</u>	On -

<u>20% Gas Alarms</u>	<u>Status</u>
<u>Ethanol No 1</u>	OK -
<u>Ethanol No 2</u>	OK -
<u>Flex 500</u>	OK -

<u>Air Flow</u>	<u>Status</u>
<u>AHU 001 SAF Air Flow</u>	Flow -
<u>AHU 001 EF Air Flow</u>	Flow -
<u>AHU 002 SAF Air Flow</u>	Flow -
<u>AHU 002 EF Air Flow</u>	Flow -

<u>40% Gas Alarms</u>	<u>Status</u>
<u>Ethanol No 1</u>	OK -
<u>Ethanol No 2</u>	OK -
<u>Flex 500</u>	OK -

# Further Information



Manutec Limited,  
Main Street, Ballingarry, Co. Limerick.  
Tel. 069-68144  
Fax. 069-68360

Email: [info@manutec.ie](mailto:info@manutec.ie)  
Website: [www.manutec.ie](http://www.manutec.ie)